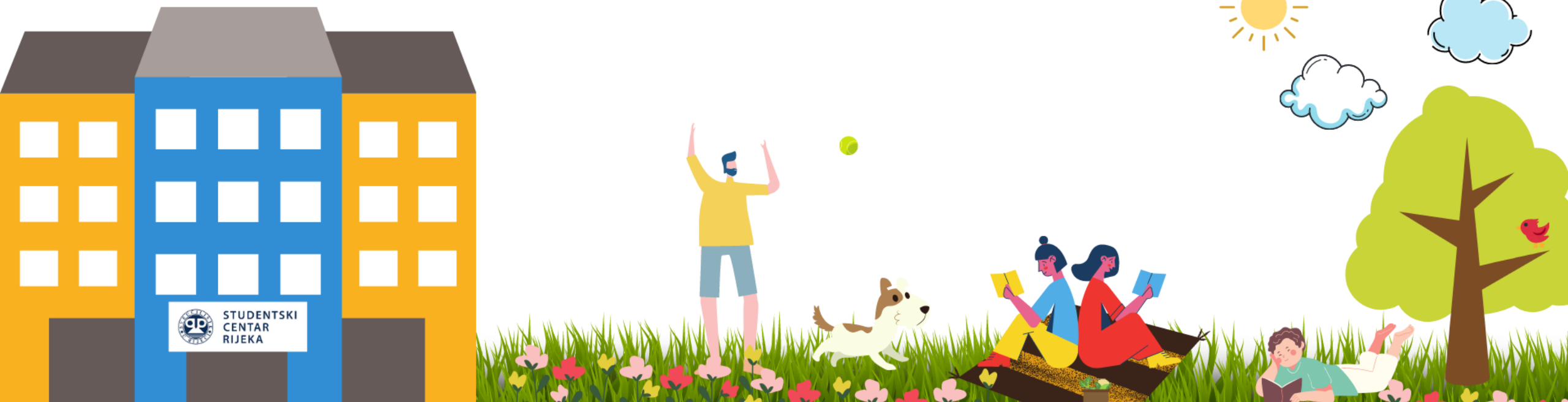


September 23, 2020

# Youth work within Student Centre Rijeka





STUDENSKI  
CENTAR  
RIJEKA

# Today's Agenda



1

Who are we ?

3

Leisure activity plan

2

Creating leisure time activities

4

Q&A section

September 23, 2020

# Let's get started!





# Who are we ?

The Student Centre Rijeka (SCRI) is an independent organization and part of the University of Rijeka. We are taking care of social and personal living standards of students at the University of Rijeka for 60 years. The main activities of the Centre are:

- 1 Student accommodation
- 2 Student restaurants
- 3 Temporary and periodical part-time student employment
- 4 Catering
- 5 Leisure time activities

# Creating leisure time activities

How are we creating leisure time activities?  
What are the steps?



1

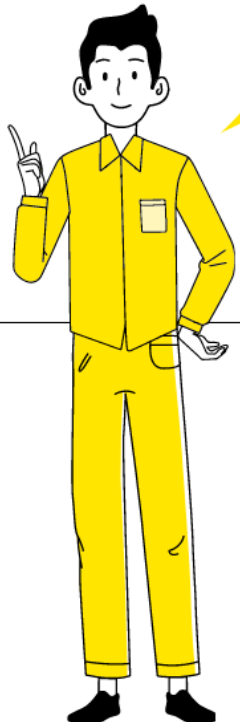
SURVEY - "What do you want do in your leisure time? "

2

Online on Facebook page, Instagram and on each Faculty official web page

3

Evaluation of the survey and creating Leisure activity plan for each semester



# Leisure activity plan

Cooperation  
with  
academic  
community  
and NGOs

For each  
semester

Including  
students in  
leading and  
organizing  
activities

Required  
cooperation  
inside  
Student  
Centre

Free for  
students

Financial  
plan, legal  
possibilities  
etc .

# Q & S Section



**Who is with  
me today ?**

# Thank you!

